

May 31, 2015

Fixed Income Index

## NORTHERN TRUST INVESTMENT GRADE US CORPORATE BOND INDEX

## INDEX IDENTIFIER

Bloomberg: NTUICB (Price Return) / NTUICBTR (Total Return)

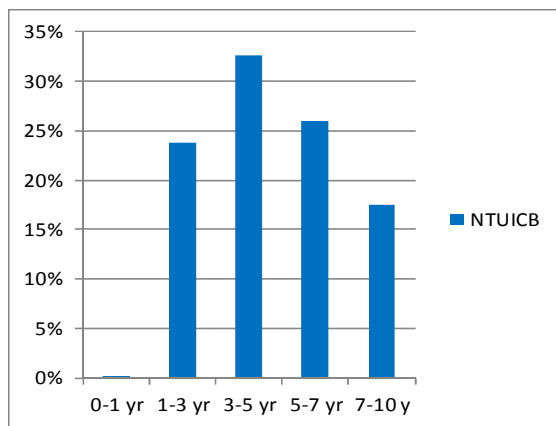
FactSet: NTUICB (Price Return) / NTUICBTR (Total Return)

## INDEX OVERVIEW

The Northern Trust Investment Grade US Corporate Bond Index is designed to measure the performance of a diversified universe of investment grade<sup>1</sup>, US dollar denominated, corporate bonds issued in the United States. The index is comprised of eligible securities with \$250mm in amount outstanding and a maturity range of two to ten years. A market value weighting scheme<sup>2</sup> is applied to derive each index constituents' weight.

For more details on this methodology, please visit the Northern Trust Index Services [webpage](#)

## WEIGHT BY EFFECTIVE DURATION



Summary	NTUICB
Constituents	3169
Avg Coupon	3.93
Avg Maturity	5.44
Yield to Worst	2.62
Yield to Maturity	2.63
Effective Duration	4.81
Avg NRSRO <sup>3</sup> Rating	A-
OAS	111.47

Top Issuers	# Issues	NTUICB
Bank of America Corp	28	2.80%
JPMorgan Chase	28	2.59%
Goldman Sachs Group	19	2.06%
Morgan Stanley	19	1.91%
General Electric	23	1.85%
Citigroup Inc	24	1.74%
Verizon Comm. Inc	19	1.64%
Wells Fargo	18	1.40%
AT&T Inc	16	1.19%
Apple Inc	11	0.99%

The index holdings and characteristics are for illustrative purposes only and are shown post all rebalancing activity at month end. Source: IDC & Bloomberg

## PERFORMANCE

NTUICB Total Return Factors	1 Month Return	3 Month Return	6 Month Return	YTD	Trailing 1 Year
Price Return	-0.37%	-0.60%	-0.27%	0.40%	
Income Return	0.32%	0.96%	1.89%	1.57%	
Total Return	-0.05%	0.36%	1.62%	1.97%	

<sup>1</sup> As defined by any of the three major credit agencies

<sup>2</sup> Market value weighting is calculated based on a constituent's current market value of debt outstanding (including accrued interest), divided by the total market value of all debt outstanding (including accrued interest) within the eligible universe.

<sup>3</sup> Nationally Recognized Statistical Rating Organization

IMPORTANT INFORMATION. The preceding information is intended for one-on-one use with current or prospective clients of Northern Trust. Information is confidential and may not be duplicated in any form or disseminated without the prior consent of Northern Trust. The information does not constitute investment advice or a recommendation to buy or sell any security and is subject to change without notice. All material has been obtained from sources believed to be reliable, but the accuracy, completeness and interpretation cannot be guaranteed. Information contained herein is current as of the date appearing in this material only and is subject to change without notice.

Past performance is no guarantee of future results. Periods greater than one year are annualized except where indicated. Returns reflect the reinvestment of dividends and other earnings and are shown before the deduction of investment management fees, unless indicated otherwise. Returns of the indexes also do not typically reflect the deduction of investment management fees, trading costs or other expenses. It is not possible to invest directly in an index. Indexes are the property of their respective owners, all rights reserved.