



*Asset Servicing Solutions*

---

# FUND SERVICES IN LUXEMBOURG

Access the widening spectrum of European fund opportunities across traditional and alternative fund sectors. Supported by our long-standing experience and our international focus, we provide the right combination of regional expertise and global capabilities for your Luxembourg asset servicing needs.

## COMPREHENSIVE, FLEXIBLE SOLUTIONS

Maximise the potential of your investments in the fast evolving Luxembourg marketplace. From protecting and servicing your assets to supporting data and compliance demands, our collaborative approach can help you achieve your goals.

### DESIGNED AROUND YOU

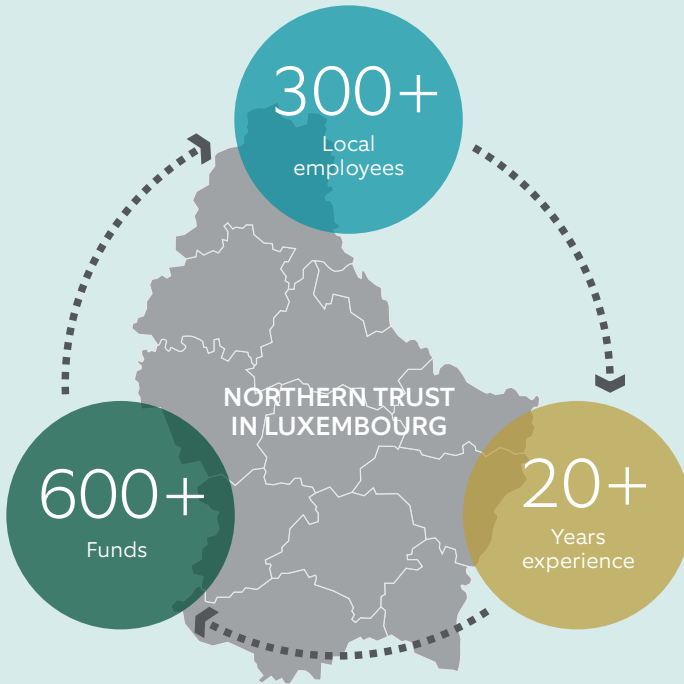
Asset managers and institutional investors alike will benefit from a flexible and tailored approach. We facilitate improved speed to market, sharp business focus and enhanced distribution for your funds.

- Take advantage of the benefits Luxembourg offers while we take care of the myriad details of servicing your funds. From handling day-to-day tasks to helping you navigate emerging regulations, we can help you eliminate distractions and improve efficiency.
- Simplify your operational governance by tapping into our deep local knowledge, which is supported by our global capabilities and infrastructure.
- Gain access to innovative ideas from a provider that has launched many solutions in the Luxembourg market to address our clients' needs, including Europe's first fully tax-transparent pension vehicle.

**A TOP 10\* PROVIDER IN LUXEMBOURG**

---

A pioneer of Europe's first cross-border tax-transparent asset pooling solutions for multi-nationals and fund managers



Receive the regional support you need while tapping into our capabilities through 26 international locations across the Americas, Asia Pacific, and Europe, Middle East and Africa (EMEA). Luxembourg is a key strategic location for Northern Trust's expanding presence in continental Europe, where we have offices in Switzerland, Sweden, Germany and the Netherlands in addition to our offices in the United Kingdom, Ireland and Guernsey.

\*By assets under administration, as ranked in the 2017 Monterey Insight Luxembourg Fund Report, based on UBS Asset Management's Luxembourg fund administration servicing unit, acquired by Northern Trust in October 2017.

---

*Supporting leading global  
and boutique fund managers,  
corporations, insurance companies,  
multinationals, and public and  
private pension institutions.*

## SOLUTIONS TO HELP YOU GROW AND EVOLVE

Gain the flexibility to evolve your approach to capitalise on new opportunities. We provide adaptable, customised solutions covering many funds and strategies, from traditional equity to complex alternative funds, including private equity, real estate, hedge and infrastructure funds.

## EXPERIENCE ACROSS THE SPECTRUM OF ASSET CLASSES



## ASSET SERVICING

Fulfil your obligations for Luxembourg-regulated funds through Northern Trust's full range of depositary banking and global custody services covering an extensive range of asset classes and fund structures:

### Depositary

- Cash flow monitoring
- Custody and asset ownership verification
- Oversight of fund activities

### Global Custody

- Safekeeping
- Trade settlement
- Proxy voting
- Tax reclamation
- Corporate actions
- Class actions

### FUND ADMINISTRATION SERVICES

Take advantage of our comprehensive administration services. You benefit from our experience across traditional funds, complemented by our specialist knowledge supporting alternative, tax-transparent and exchange traded funds. Our core services span:

- Fund launch management
- Fund accounting
- Portfolio pricing
- Financial / client / regulatory reporting
- Transfer agency / investor services
- Corporate secretarial and domiciliation agent

### ASSET ENHANCEMENT

Address your multiple challenges from trading in global capital markets through Northern Trust Capital Markets. By aligning our foreign exchange, transition management, brokerage and securities lending services we deliver swift execution, transparent trading and smart liquidity solutions to better address your global market pressures.

---

Enhance your strategy with our global liquidity credit facilities, payments processing, currency accounts and data aggregation.

### SUPPORTING THE FULL SPECTRUM OF LUXEMBOURG FUNDS

Luxembourg is a leading domicile for Undertakings for Collective Investments in Transferable Securities (UCITS) – the vehicle of choice for traditional investments – as well as being a leading hub for Alternative Investment Funds (AIFs).

- **FCPs** - Fonds Commun de Placement (common investment funds)
- **SICAVs** - Société d'Investissement à Capital Variable (open-ended investment companies)
- **SICARs** – Investment companies in risk capital
- **SIFs** - Specialised Investment Funds
- **RAIFs** - Reserved Alternative Investment Funds (similar to the Luxembourg SIF regime but not requiring approval of the Luxembourg regulator, the CSSF)

In addition, Northern Trust provides custody and administration services to support complex Luxembourg Pension Savings Associations (ASSEPs).

### MEETING YOUR REGULATORY NEEDS

Receive support to keep up-to-date and address evolving Luxembourg, European and global regulatory requirements. Our Global Regulatory Solutions team works with regional and global industry organisations to monitor changes, translate regulatory obligations and create services to address them.

You'll get a holistic view of the latest movements and trends, as well as regular opportunities to connect with your peers through webinars, information sessions, conferences and workshops.

## SOPHISTICATED TECHNOLOGY FOR YOUR BUSINESS

Northern Trust Passport® gives you access to all your portfolio data in one easy-to-use application. Its powerful analytical tools allow you to easily identify and integrate the precise data you need to make insightful decisions.





## Committed To Client-Led Solutions

Over the years we have built a reputation for listening to our clients' needs and actively working to address them. For example, in direct response to a client's request we formed a consortium to launch Europe's first fully tax-transparent cross-border pooling vehicle for a multinational in the form of a Luxembourg-domiciled Fonds Commun de Placement (FCP) in 2005.

This involved working with the Luxembourg government and regulators to initiate change. As a result, the client was able to benefit from a more efficient way of pooling their local pension plans from around the world.

Since then many other investment managers and multinationals have launched tax-transparent fund vehicles in Luxembourg to achieve the range of benefits these vehicles potentially provide – from reduction in withholding tax drag to savings and increased governance oversight via the consolidated structure.

*What can our experienced and innovative teams help you achieve?*

UNIQUELY QUALIFIED TO ADDRESS YOUR NEEDS

---

European  
Administrator  
of the Year

*FUNDS EUROPE, 2017*

European  
Innovator  
of the Year

*FUNDS EUROPE, 2017*

European  
Thought Leader  
of the Year

*FUNDS EUROPE, 2017*

Private Equity  
Fund Administrator  
of the Year

*GLOBAL INVESTOR/ISF AWARDS, 2017*

## FOR MORE INFORMATION

To learn more about how you can take advantage of our fund services in Luxembourg, contact your Northern Trust relationship manager:

### **Marco Siero**

Senior Sales Representative  
Luxembourg  
Tel: +352 27 62 22 407  
marco\_siero@ntrs.com

### **Office**

6 rue Lou Hemmer  
L-1748 Senningerberg  
Grand-Duché de Luxembourg  
Tel: +352 27 62 72 1

© 2019 Northern Trust Corporation. Head Office: 50 South La Salle Street, Chicago, Illinois 60603 U.S.A. Incorporated with limited liability in the U.S. Products and services provided by subsidiaries of Northern Trust Corporation may vary in different markets and are offered in accordance with local regulation. This material is directed to professional clients only and is not intended for retail clients. For Asia-Pacific markets, it is directed to expert, institutional, professional and wholesale investors only and should not be relied upon by retail clients or investors. **For legal and regulatory information about our offices and legal entities, visit [northerntrust.com/disclosures](https://northerntrust.com/disclosures).** The following information is provided to comply with local disclosure requirements: The Northern Trust Company, London Branch. Northern Trust Global Investments Limited. Northern Trust Securities LLP. Northern Trust Global Services SE, 6 rue Lou Hemmer, L-1748 Senningerberg, Grand-Duché de Luxembourg RCS B232281; Northern Trust Global Services SE UK Branch, 50 Bank Street, London E14 5NT; Northern Trust Global Services SE Sweden Bankfilial, Ingmar Bergmans gata 4, 1st Floor, 114 34 Stockholm, Sweden; Northern Trust Global Services SE, Abu Dhabi Branch, registration Number 000000519 licenced by ADGM under FSRA # 160018. The Northern Trust Company of Saudi Arabia - a Saudi closed joint stock company - Capital SAR 52 million. Licensed by the Capital Market Authority - License No. 12163-26 - C.R: 1010366439. Northern Trust Luxembourg Management Company S.A., 6 rue Lou Hemmer, L-1748 Senningerberg, Grand-Duché de Luxembourg, *Société anonyme* RCS B99167. Northern Trust (Guernsey) Limited (2651)/Northern Trust Fiduciary Services (Guernsey) Limited (29806)/Northern Trust International Fund Administration Services (Guernsey) Limited (15532) Registered Office: Trafalgar Court Les Banques, St Peter Port, Guernsey GY1 3DA.