



**NORTHERN  
TRUST**

**GLOBAL  
FAMILY &  
PRIVATE  
INVESTMENT  
OFFICES**

**EXECUTIVE  
SUMMARY 2022**

# BUILDING A LONG-TERM RELATIONSHIP



**DAVID W. FOX, JR.**  
**PRESIDENT**  
Global Family &  
Private Investment Offices

## NORTHERN TRUST AS YOUR FAMILY OFFICE ADVISOR AND PARTNER

On behalf of Northern Trust, I would like to thank you for your interest in our Global Family & Private Investment Offices (GFO) group. We know that families and family offices come in different shapes and sizes, and have unique attributes that require a distinct service model. Their size, complexity, investment horizon and need for advanced technology architecture set them apart from the broader universe of wealth management. Northern Trust's GFO group is a recognized leader in this wealth tier due to the following distinguishing attributes of our business:

### COMMITMENT AND EXPERTISE IN WORKING WITH PRIVATE CLIENTS

For more than 130 years, Northern Trust has been committed to the private trust and investment business, with over two-thirds of the Company's profits derived from the wealth management needs of individuals, families and their related entities. Our proven and focused commitment to this business, and continued investment in the resources needed to continue its success supports our longevity and strength as a partner to your family.

### DEEP KNOWLEDGE OF FAMILIES AND FAMILY OFFICES

Individual family members and the family office can benefit from the knowledge we have gained in working with more than 500 of the wealthiest families and family offices around the globe, as well as our deep involvement in the industry. Our team of dedicated professionals partner with our clients and their advisors to become "extensions" of your family, by working together to deliver high quality services, solutions and advisory capabilities.

**CULTURE**

Service, Expertise and Integrity are the core principles driving our service model and all of our business decisions. In working with GFO, you will have a partner that prioritizes your needs first. We firmly believe that doing what is right for our clients is the best way to grow our business. We feel very strongly that developing and nurturing personal relationships are the cornerstone for long-term business relationships.

I would like to give you my personal affirmation of our commitment to your family and its needs, over both the short and long term. We hope that the information that follows helps to underscore that promise, and we look forward to meeting with you in the near future to discuss more specifically how we can support you.

We would be honored to count you among our clients, and we thank you for considering us.

**DAVID W. FOX, JR.**A handwritten signature in black ink, appearing to read "D. Fox, Jr.", with a stylized flourish at the end.

# GLOBAL FAMILY & PRIVATE INVESTMENT OFFICES (GFO)

Voted “Best Private Bank in the U.S. for Family Offices” by Financial Times Group (2021).

GFO is a dedicated practice within Northern Trust. We provide relationship excellence by delivering high-quality asset servicing, investment, technology, fiduciary, banking and advisory solutions to the clients we serve. We foster long-term relationships by offering an unparalleled combination of service, expertise and capabilities tailored to the distinct needs of our clients.

## GFO SITS AT THE INTERSECTION OF NORTHERN TRUST’S CORE CLIENT SEGMENTS



### Client Base

- SINGLE FAMILY OFFICES
- ULTRA-HIGH NET WORTH INDIVIDUALS AND FAMILIES
- PRIVATE INVESTMENT COMPANIES
- FAMILY FOUNDATIONS
- PRIVATE TRUST COMPANIES

### Key Statistics

- 500+** FAMILY RELATIONSHIPS
- 30+** COUNTRIES
- \$1,000M** AVERAGE CLIENT SIZE
- \$240M+** MEDIAN CLIENT SIZE
- 30%** FORBES 400 WEALTHIEST AMERICANS
- 130+** BILLIONAIRE FAMILIES
- 300+** DEDICATED NORTHERN TRUST PROFESSIONALS

Data as of 3/31/2022. Not for use outside of the United States.

CHICAGO | LONDON | GUERNSEY | ABU DHABI | SINGAPORE | MELBOURNE

# SERVICE SUMMARY

Northern Trust's Global Family & Private Investment Offices (GFO) harnesses the best of Northern Trust's resources from across the enterprise, delivering a comprehensive range of solutions that supports our clients' success.

## INVESTMENTS



- Asset Management
- Investment Advisory
- Capital Markets
- Customized Alternatives

## FINANCIAL INFORMATION MANAGEMENT



- Global Asset Servicing
- FinTech & Reporting
- Performance Measurement, Risk & Compliance Services
- Fund Admin, Partnership Accounting & General Ledger
- Whole Office

## FIDUCIARY & ADVISORY



- Discretionary, Administrative & Directed Trustee Services
- Education & Governance, Wealth Transfer & Special Asset Solutions
- Family Office Consulting & Advisory
- Private Trust Company Services

## FINANCE & BANKING

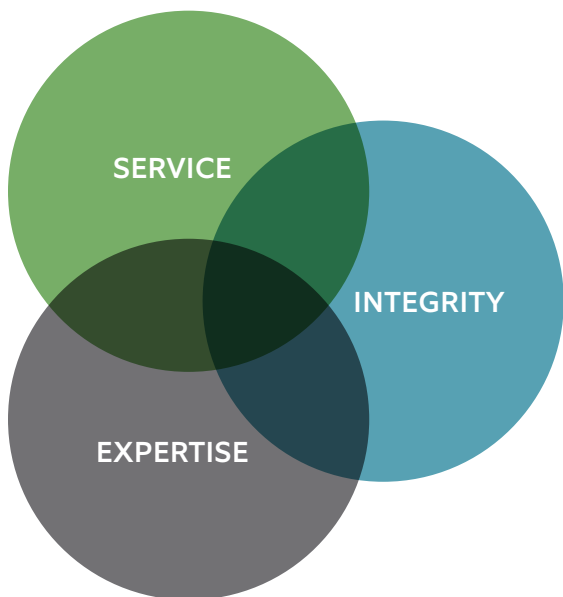


- Financing & Credit Solutions
- Private & Commercial Banking Solutions

# CLIENT SERVICE & ENGAGEMENT

This is about *your* goals, needs & values.

Northern Trust surrounds each relationship with **superior service and world-class capabilities**, aligning our shared values and **drawing on resources from across the enterprise**.



## SERVICE

- Keep clients at the center of everything we do
- Act as a consultative partner
- Tailor solutions based on listening and understanding
- Provide day-to-day tactical support
- Anticipate needs

## INTEGRITY

- Act with the highest ethics and integrity
- Develop relationships based on trust and reliability
- Focus on putting the client first

## EXPERTISE

- Hire and support talented professionals
- Provide clients with access to the latest in industry trends
- Deploy resources from across the organization

### SERVICE LEVEL EXPECTATIONS

**Creation:** Northern Trust works with you to develop the agreement

**Standards:** Provides formal documentation of agreed goals and performance requirements

**Communication:** Details contact information for team members and outlines escalation procedures

### RELATIONSHIP REVIEWS

**Review:** Discuss our performance against the standards set by you

**Response:** Address issues as needed and agree upon time frames for resolution

**Result:** Continue the two-way conversation of our service balancing your business needs

### EXECUTIVE OVERSIGHT

**Schedule:** Client relationships are reviewed at least annually

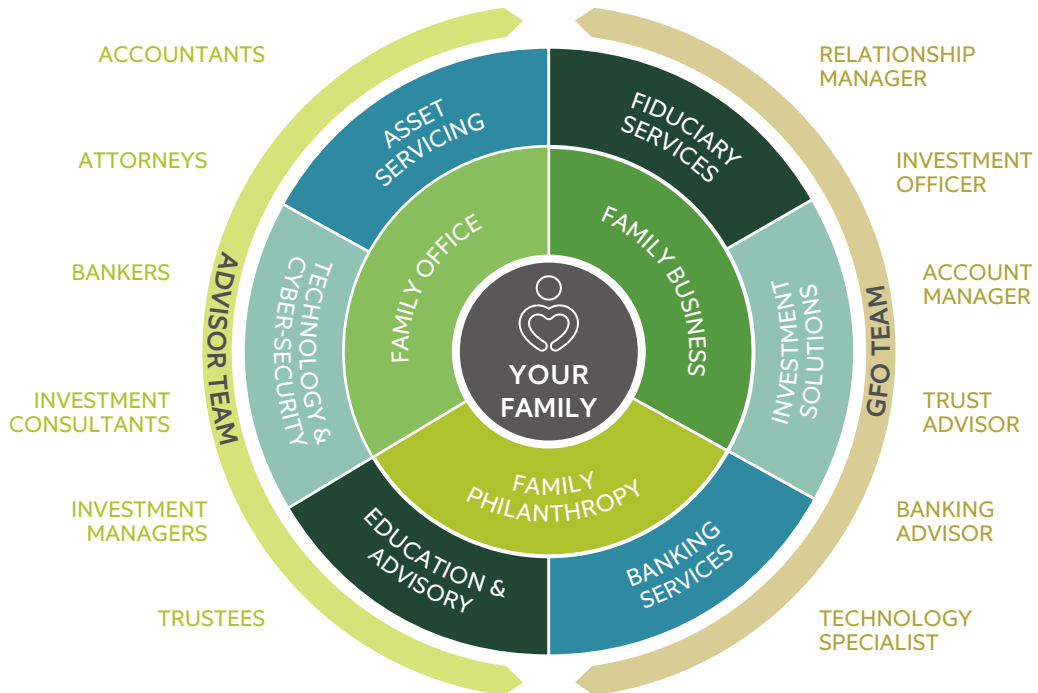
**Awareness:** Senior Management is actively engaged in client requirements

**Support:** Ensures client relationships are operating optimally

# RELATIONSHIP MANAGEMENT

Our clients are our central focus, giving you the freedom to focus on what really matters.

**Service, Expertise** and **Integrity** serve as the foundation of the GFO relationship management strategy.



## RELATIONSHIP MANAGER

- Strategic oversight
- Support alignment of goals, resource utilization and service
- Calling programs
- Overall service and satisfaction
- Share best practices and trends

## ACCOUNT MANAGER

- Daily account inquiries
- Risk assessment monitoring
- Process improvement
- New accounts, transition events
- Complex operational issues
- Industry best practices

## ONBOARDING CONSULTANT

- Project plan, governance document and onboarding schedule preparation
- Regular status reports and onboarding metrics to all parties involved

## SPECIALISTS

- Investment Advisors
- Portfolio Managers
- Technology & Reporting Consultants
- Bankers
- Fiduciary Specialists
- Wealth Planners

# INVESTMENT ADVISORY & ASSET MANAGEMENT

We offer clients the dedicated focus of a boutique advisor combined with the deep resources of a global investment manager.

The GFO Investment Advisory Practice is a **results-oriented team** who partners with our clients as **an extension of their office and staff**.

<p>27</p> <p>DEDICATED PROFESSIONALS</p>	<p>8-10</p> <p>CLIENT-TO-ADVISOR RATIO</p>
<p>\$140B</p> <p>ASSETS UNDER MANAGEMENT &amp; ADVISEMENT<sup>1</sup></p>	<p>24 YEARS</p> <p>INVESTMENT PROFESSIONALS' AVERAGE YEARS OF EXPERIENCE</p>

## INVESTMENT ADVICE

1. *Asset Allocation – Strategic & Tactical*
2. *Portfolio Construction*
3. *Manager Due Diligence & Selection*
4. *Balance Sheet & Liquidity Analysis*
5. *Risk Management*

## ACCESS & IMPLEMENTATION

1. *\$1.2 Trillion+<sup>2</sup> AUM Global, Multi-Asset Class Firm*
2. *Institutional, Multi-Manager Platform*
3. *50 South Capital Alternatives Firm<sup>3</sup>*

## INVESTMENT SOLUTIONS

### EQUITY

- Tax Advantaged
- Factor-Based
- Passive
- Multi-Manager
- ESG

### FIXED INCOME

- Municipal
- Active
- Liquidity
- Multi-Manager
- Sustainable

### ALTERNATIVES

- Hedge Funds
- Private Equity
- Private Credit
- Real Assets
- Infrastructure
- Real Estate

1) Source: Northern Trust Global Family Office and Northern Trust, Multi-Manager Solutions, data as of 3/31/2022.

2) Total assets managed by the subsidiaries of Northern Trust Corporation as of 3/31/2022.

3) 50 South Capital is a wholly-owned, non-banking subsidiary of Northern Trust Corporation.



# GLOBAL ASSET ADMINISTRATION

Keeping your assets safe and accounted for at all times.

Our emphasis on asset safekeeping, automation, straight-through processing (STP), accuracy and timeliness reduces **risk**, enhances **efficiency**, minimizes **cost** and enhances **transparency**.

## CLIENT ENTITIES

Trusts	Corporations	Foundations	Investment Partnerships	Individuals	Offshore Entities
--------	--------------	-------------	-------------------------	-------------	-------------------



## CLIENT ASSETS

Cash	Marketable Securities	Alternative Investments	Offshore Investments	Real Assets	Operating Businesses
------	-----------------------	-------------------------	----------------------	-------------	----------------------



## A SINGLE GLOBAL OPERATING PLATFORM

Trade receipt & capture	Trade settlement	Asset safekeeping	Income collection & tax reclamation	Alternative asset servicing	Corporate actions & class actions	Proxy voting	Accounting, tax & reporting
-------------------------	------------------	-------------------	-------------------------------------	-----------------------------	-----------------------------------	--------------	-----------------------------



## INTEGRATED REPORTING & TECHNOLOGY SOLUTIONS

# TECHNOLOGY, REPORTING & DATA DELIVERY

Offering end-to-end technology and reporting solutions, creating Operational Alpha™ and Operational Efficiencies for our clients.

## WE BUILD TECHNOLOGY AND REPORTING SOLUTIONS THAT:

1

Create **Operational Alpha™** — Allow our clients to have on-demand, decision-ready tools and services to make thoughtful business and portfolio decisions.

2

Create **Operational Efficiency** — Enable our clients to manage work-flows more seamlessly by offering automated solutions.

### FINANCIAL REPORTING

- Consolidated Financial Reports
- Trust Accounting
- Partnership Accounting
- Partnership Reporting
- General Ledger
- Standard Report Library
- Custom & Ad-Hoc Reporting
- Report Automation
- Data Visualization Tools
- Alternative Asset Administration

### TRANSACTIONS & ADMINISTRATION

- Cash Movement
- Transactions
- Capital Activity
- Alerts & Notifications
- Trade Input
- Foreign Exchange Trading
- Document Storage
- Regulatory Reporting

### PORTFOLIO PERFORMANCE & ANALYTICS

- Performance Measurement
- Investment Analytics
- Portfolio Exploration
- Compliance Monitoring
- Bespoke Reports & Visuals
- Alternative Asset Performance
- Scenario & Stress Testing
- Portfolio Modelling
- Manager Behavior Analytics
- Holistic Wealth Planning

### FAMILY MEMBER TOOLS

- Data Visualizations
- Custom Dashboards
- Mobile Approvals
- Net Worth Snapshots
- Market Reports & Bulletins

### DATA MANAGEMENT & SECURITY

- Global Custodian
- Data Aggregation & Feeds
- Cybersecurity – Firewall
- Mobile Accessibility
- Custom Authentication & Access Levels

### DEDICATED SUPPORT & SERVICE

- Dedicated Relationship Team
- Individualized Online Consultant who can help with system navigation, custom report creation, best practices, and increasing operational efficiency
- Operational Business Process Reviews

# PERFORMANCE MEASUREMENT & RISK SERVICES

Better data. Better tools. Better decision making.

With **\$5 trillion under Measurement\***, Northern Trust is one of the largest providers of performance and risk measurement services worldwide.

## CAPABILITIES

<p><b>PERFORMANCE MEASUREMENT SERVICES</b></p> <ul style="list-style-type: none"> <li>• Portfolio Returns &amp; Benchmarking</li> <li>• Attribution Analysis</li> <li>• Peer Group Analysis</li> </ul>	<p><b>MARKET RISK SERVICES</b></p> <ul style="list-style-type: none"> <li>• Risk Decomposition</li> <li>• Liability Monitoring</li> <li>• Ex-Ante Risk Analysis</li> </ul>
<p><b>COMPLIANCE MONITORING SERVICES</b></p> <ul style="list-style-type: none"> <li>• Fully Outsourced Solutions</li> <li>• Breach Notification &amp; Resolution</li> <li>• Guideline Monitoring</li> </ul>	<p><b>PRIVATE EQUITY SERVICES</b></p> <ul style="list-style-type: none"> <li>• Enhanced Private Equity Analytics</li> <li>• Peek-Through Analysis</li> <li>• Capital Call Forecasting</li> </ul>

## INFORMATION DELIVERY

WEALTH PASSPORT PORTAL



MOBILE DASHBOARDS



DOWNLOAD AND EXTRACT DATA



\*Data as of 12/31/2019; market value of assets on the Northern Trust PACE system.

# FIDUCIARY EXPERTISE

Discover the benefits that over a century of fiduciary experience can deliver.

We take a **contemporary, highly focused, and flexible** approach to traditional trustee services. This allows us to present **customized solutions** along the spectrum of fiduciary services — from fully discretionary trustee and directed trustee services to supporting private trust companies. Your trust will be among a limited client base with a dedicated Trust Advisor, who brings substantial experience for resolving fiduciary and family office issues. Our fiduciary clients hail from all corners of the globe, often seeking the best jurisdiction to suit their tax, mobility, and generational planning needs. Regardless of your planning objectives or the nature of your assets, we are able to meet your family's needs now and for generations to come.

## FIDUCIARY CAPABILITIES



### TRUST ADMINISTRATION

Northern Trust is a world-class asset servicer with a fiduciary heritage. We work with the full spectrum of trusts and related trust structures, including private trust companies. Our exposure to a broad array of trusts means we understand the need for comprehensive reporting, governance, administration, and sophisticated technology to support the structure, scale, and complexity of your relationship.



### DISTRIBUTION DISCRETION

This is a *personal* business. We take time to develop relationships across generations, understand everyone's unique needs and, when appropriate, provide the objectivity to help align family expectations with the settlor's intent, as expressed in the instrument.



### INVESTMENT DISCRETION

Investment expertise is shaped by a unique vantage point of seeing across our GFO client base. We have developed a flexible, open framework designed to identify and support the most effective and efficient way of supporting the investment needs of each trust's investment policy statement.



### ADVISORY SERVICES

We offer expert advice from across our wealth management business to multi-generational families and office professionals, backed by a broad array of capabilities and delivered with the highest level of service and integrity. You will have access to top experts in family education and governance, philanthropy, tax and wealth transfer, estate administration, specialized assets (such as real estate, oil & gas, art) and more.

We serve clients in all 50 U.S. states and 30 global jurisdictions, with special purpose capabilities in Delaware, Nevada, Cayman and Guernsey.

# FINANCE AND BANKING

Customized credit and treasury offerings.

We provide **custom credit and liquidity management solutions** structured to fulfill your unique financing needs.

<p>Attentive to interrelationship of cash flow requirements, tax and estate planning and asset allocation formulas</p>	<p>Strategically use credit without disruption to ongoing asset management strategies</p>
<p>Supply flexible financing for purchase/refinancing of real estate, with maturities that consider your overall financial plan</p>	<p>Monetize illiquid assets such as partnership and LLC interests</p> <p>Liquidity management</p>

## KEY SOLUTIONS

### FINANCE

- Credit Lines
- Letters of Credit
- Structured Finance
- Margin Financing
- Asset Acquisition/Refinance
- Investment Program Leverage
- Interest Rate Swaps
- Aircraft Financing
- Art Financing
- Yacht Financing

### BANKING

- Personal and Commercial Accounts
- Interest/Non-Interest Checking Accounts
- Premium Money Market Deposit Accounts
- Treasury Management Services
- CDs
- Quarterly Tax Payments
- Foreign Currency Accounts
- Wire Transfers/ACH
- Traditional and Roth IRAs

# CAPITAL MARKETS

We create tailored solutions to address your portfolio challenges.

GFO works with Northern Trust Capital Markets to provide **brokerage, foreign exchange, transition management and securities lending** solutions for our clients.



## FOREIGN EXCHANGE

Provides **innovative liquidity and price transparency** through innovative technology



## TRANSITION MANAGEMENT

Combines **risk and project management** with global trading expertise



## SECURITIES LENDING

Helps **generate consistent returns**, with expertise and global connectivity



## BROKERAGE

Operates an **agency model focusing on execution quality and trade transparency** to meet your trading needs.



## OUR EXPERTS WILL

Take time to **listen** to understand your challenges

**Speak** the same language as your front office teams

Be **knowledgeable** of our entire suite of capabilities

**Build** client specific solutions that match your needs

# CONSULTING & ADVISORY SERVICES

Confront your questions, unpack dynamics and seek innovative solutions for your family's unique needs.

As a family's wealth management needs and solutions become more complex, GFO has in-house experts who can **consult** with you to find, or innovate, the optimal solution.

## INVESTMENTS

- Investment policy statement creation/review
- Asset allocation & portfolio construction analysis
- Portfolio factor & ESG analysis
- Investment infrastructure/resourcing

## FAMILY OFFICE CONSIDERATIONS

- Governance structures
- Service & solution requirements
- Insourcing vs. outsourcing
- Staffing considerations

## BUSINESS PROCESS REVIEWS

- Streamlining processes/procedures
- Automation through technology
- Enhancing reporting solutions
- Mitigating operational risk

## ADVISORY SERVICES & SPECIAL ASSETS

- Real estate management
- Oil, gas & minerals
- Family education & governance
- Family business

## FIDUCIARY & GOVERNANCE

- Contemporary trustee structures
- Board and governance structures
- Trust and estate plan reviews
- Onshore/offshore jurisdictions

## DIFFERENTIATED BY OUR:



# CLIENT COMMUNITIES

Connect, learn and engage.

---

With a global client base of more than 500 families, GFO acknowledges and harnesses the power of experiences learned by others. We have developed various programs that enable our members to **share best practices**, learn from cutting-edge experts and **network with peers**. Issues important to **you** craft our agendas.

## GLOBAL FAMILY OFFICE NETWORKING

---

### GLOBAL WEALTH ALLIANCE

A network of CEOs and Principals for the world's wealthiest family office clients

### FINANCIAL EXECUTIVES GROUP

Developed for CFOs and COOs of U.S.-based family offices

### WHARTON GLOBAL FAMILY ALLIANCE

A captive collaboration with the Wharton School for research & learning opportunities

### PRIVATE TRUST COMPANIES

A community intended to support our more than 50 private trust and family trust company clients

### FOUNDER'S CIRCLE

GFO's focused advisory board comprised of current and former family office CEOs

### WOMEN'S INVESTMENT EXCHANGE

Women-owned and led network of senior family office investment professionals

### RISING GEN

A quarterly small group gathering of next generation family members ages 22-40

### VIRTUAL WINVESTMENT EXCHANGE

Regional investment networks of family office investment professionals with open discussion facilitated by GFO specialists

### VISIONARIES

GFO advisory group focusing on the future of family office technology

### NEXUS

A small group forum for European and Middle Eastern family offices

## SPECIALIZED CONTENT

---

### INVESTMENT INSIGHTS

Periodic content curated by the GFO Investment Practice featuring unique ideas, strategies, or opportunities for family office clients

### BENCHMARKING

Periodic benchmarking surveys exclusive for GFO clients

### GFO PULSE

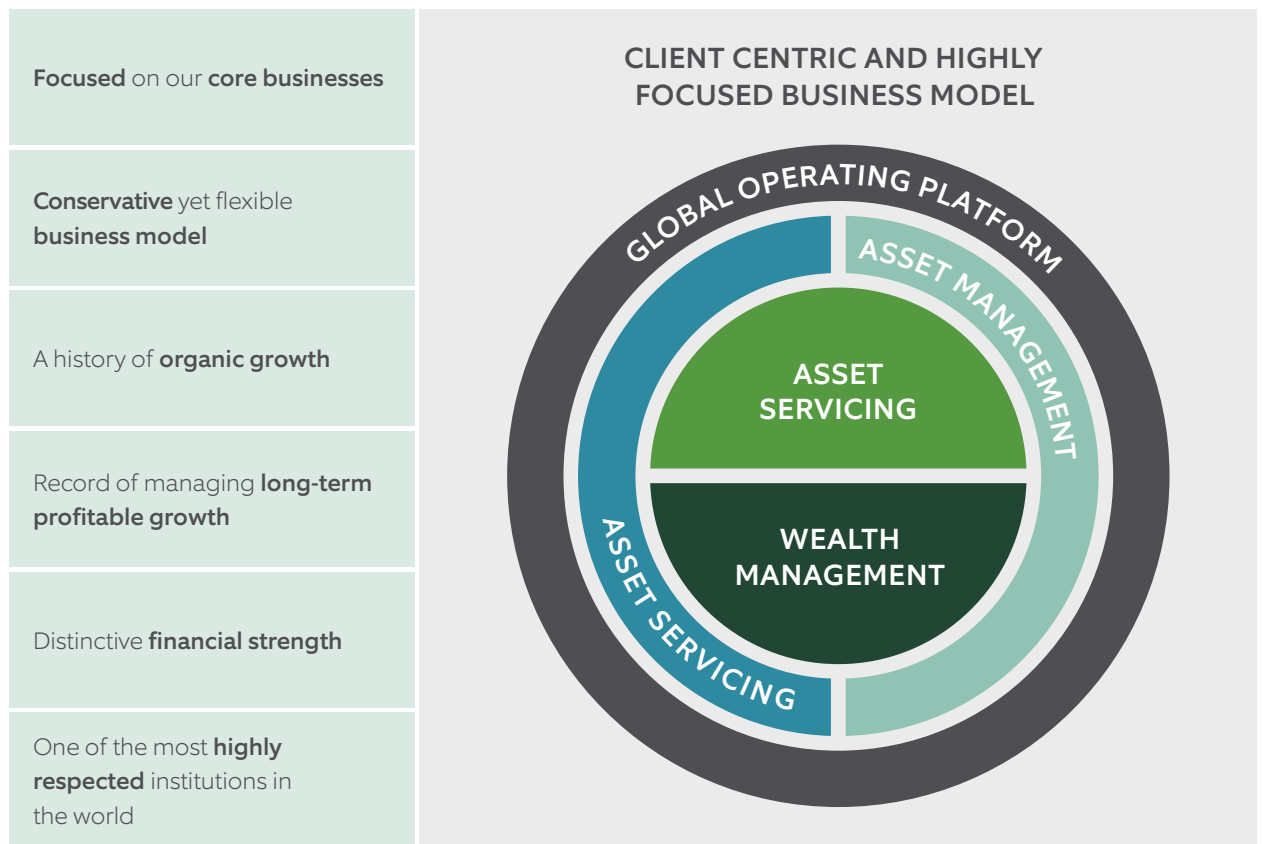
Frequent and digestible postings and podcasts on topics relevant to Global Family Office clients



# NORTHERN TRUST CREDENTIALS

We are **your** Northern Trust.

Founded in 1889, Northern Trust is a leading provider of wealth management, asset servicing, asset management and banking to corporations, institutions, affluent families and individuals.



**\$12 trillion**

ASSETS UNDER CUSTODY

**\$1.5 trillion**

ASSETS UNDER MANAGEMENT

**\$15.5 trillion**

ASSETS UNDER CUSTODY/ADMINISTRATION

**26**

GLOBAL LOCATIONS

**53**

COUNTRIES SERVICED

**101**

MARKETS SERVICED

**26,000+**

STAFF WORLDWIDE

Data as of 3/31/2022 unless otherwise indicated.

# NORTHERN TRUST ACCOLADES

Our success is your success.

2021	<b>Best Private Bank in the U.S.</b> FINANCIAL TIMES GROUP
2021	<b>Best Private Bank in the U.S. for Family Offices</b> FINANCIAL TIMES GROUP
2020	<b>Best Private Bank for Family Office Services</b> GLOBAL FINANCE
2019	<b>Best Private Bank for Succession Planning</b> FINANCIAL TIMES GROUP
2019	<b>Best Private Bank for Family Office Services, Global &amp; North America</b> GLOBAL FINANCE

© 2022, Northern Trust Corporation.

Head Office: 50 South La Salle Street, Chicago, Illinois 60603 U.S.A. Incorporated with limited liability in the U.S.


Northern Trust Asset Management is composed of Northern Trust Investments, Inc., Northern Trust Global Investments Limited, Northern Trust Global Investments Japan, K.K., NT Global Advisors, Inc., 50 South Capital Advisors, LLC, and personnel of The Northern Trust Company of Hong Kong Limited and The Northern Trust Company.

LEGAL, INVESTMENT AND TAX NOTICE: This information is not intended to be and should not be treated as legal, investment, accounting or tax advice and is for informational purposes only. Readers, including professionals, should under no circumstances rely upon this information as a substitute for their own research or for obtaining specific legal, accounting or tax advice from their own counsel. All information discussed herein is current only as of the date appearing in this material and is subject to change at any time without notice.

This information contained herein, including any information regarding specific investment products or strategies, is provided for informational and/or illustrative purposes only, and is not intended to be and should not be construed as an offer, solicitation or recommendation with respect to an investment transaction, product or strategy. Past performance is no guarantee of future results. All material has been obtained from sources believed to be reliable, but its accuracy, completeness and interpretation cannot be guaranteed.

Securities products and services are sold by registered representatives of Northern Trust Securities, Inc., (member FINRA, SIPC), a registered investment advisor and wholly owned subsidiary of Northern Trust Corporation. Investments, securities products and brokerage services are:

NOT FDIC INSURED	May lose value / No bank guarantee
------------------	------------------------------------

The Northern Trust Company | Member FDIC | Equal Housing Lender 

PRIVACY NOTICE : To learn about how Northern Trust uses the personal information you provide and your related rights please visit <https://www.northerntrust.com/united-states/privacy/north-america>.

